



LYRA-ETK

DIGITAL DENTAL PROTOCOLS

Simple . Safe . Accessible

IMPLANTOLOGY



DIGITAL

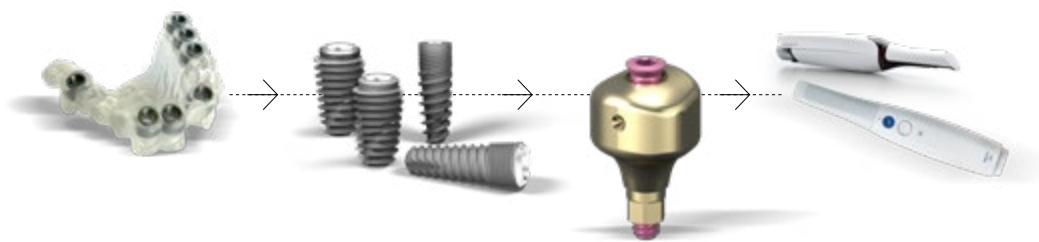


TWO AREAS OF EXPERTISE

LYRA ETK is a **French medtech** company specializing in dental restoration.

It integrates traditional implantology and new digital technologies to offer functional and aesthetic restorative solutions.

LYRA ETK offers **simple, safe and accessible** digital dental protocols for the benefit of dentists, laboratories and patients.





MADE IN FRANCE

LYRA ETK is based at the heart of a **cutting-edge industrial site**, the No. 1 in France for micromechanics and screw-cutting, and **controls every stage in its product manufacturing**. It is associated by France's leading dental supplies and equipment distribution group..



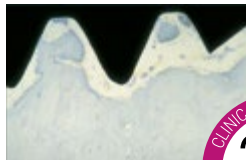
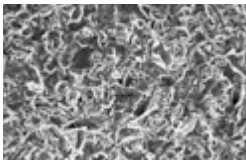
LYRA ETK PROTOCOLS

- Based on the **most advanced knowledge** of the anatomy and behaviour of peri-implant tissues.
- **Less invasive, more conservative** restorations.
- **Codified protocols, predictable** and **reproducible** performance.
- **Save time in the dental chair** by optimizing procedures.
- Training in procedures **as close as possible to your own practice** (tutoring) and **at your own pace** (e-learning).
- **Compatible** with most intra-oral scanners, implant systems, implant planning and design software.

SCIENCE AND GUARANTEES

Our protocols are validated **in vitro and in vivo** by the **Scientific Committee**, our **university partners** and independent agencies.

CERTIFIED SURFACE QUALITY



PRECISE, LEAK-PROOF TAPERED CONNECTION



COMMITMENT TO EXCELLENCE

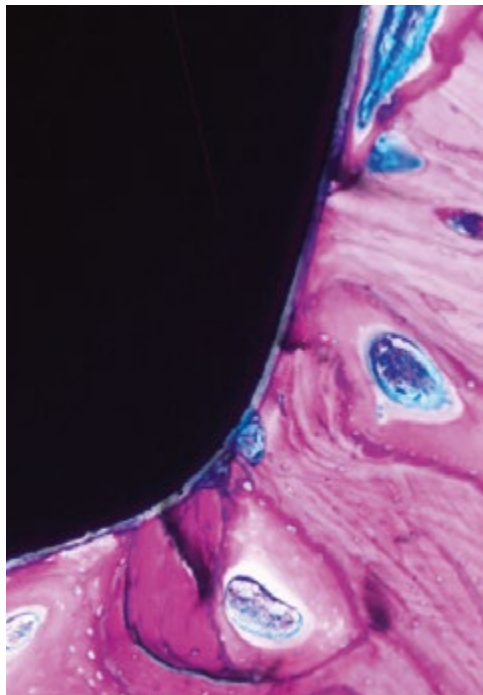
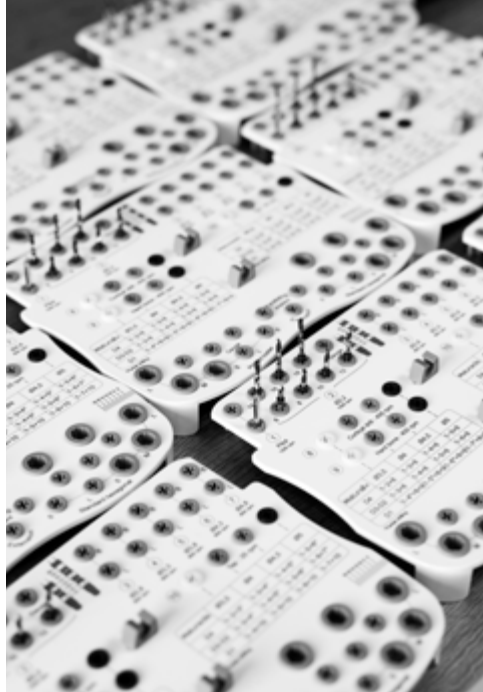


LYRA ETK is committed to excellence and continuous improvement in order to offer the best guarantees.



Implants with lifetime guarantee
Prosthetic parts guaranteed for 10 years





INNOVATION IN DNA

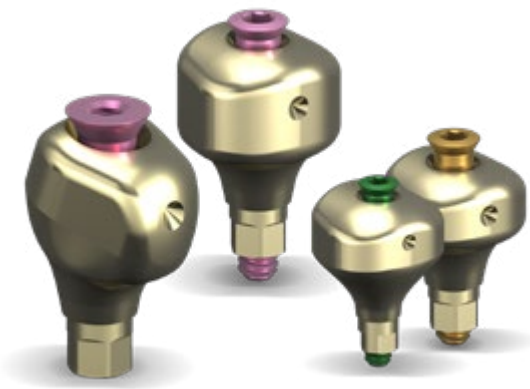


PROFILE DESIGNER
iphysio®

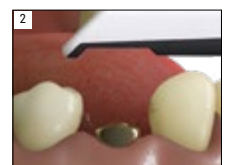


100% DIGITAL IMPLANTOLOGY

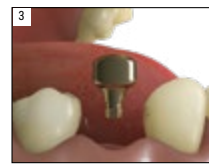
- **One piece**, for the entire implant protocol: Use for **healing, impression and temporary prosthesis** without disassembly, thus without breaking the mucosal attachment.
- **Anatomical**: preserves the papillae and soft tissues for a better aesthetic result for the patient.
- **Scannable**.
- **Compatible with most brands** of CT scanners, implants and prosthetic bases.



Screwing of the iPhysio®



Taking of the digital or conventional impression



Removal of the iPhysio®



Placement of the final prosthesis

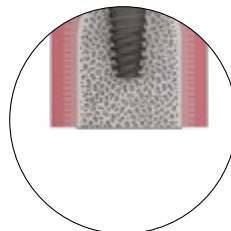
■ SIMPLE

- > 1 single piece for healing, impression and temporary restoration.
- > No disassembly, 4 manipulations instead of 8.
- > 1 impression less (no emergence impression).



■ SAFE

- > bacterial shield: Protected connection.
- > zirconia coating to prevent bacterial retention.



■ ACCESSIBLE

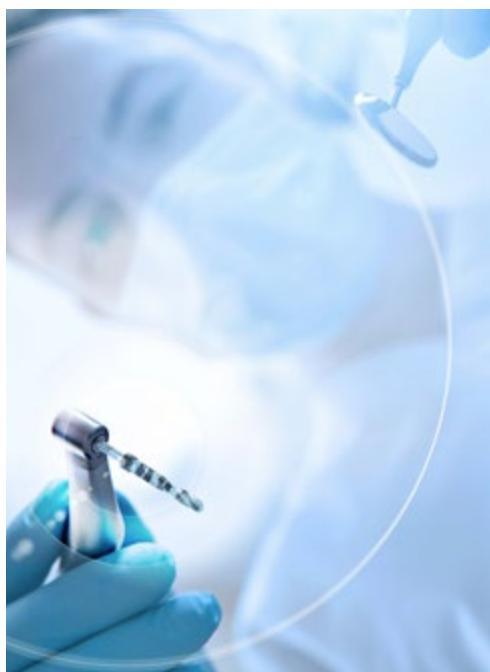
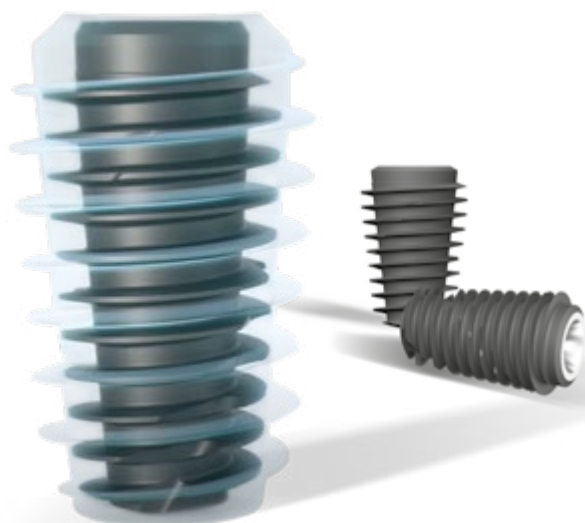
- > Save two parts : the scanbody and the temporary abutment.
- > Codified protocol.
- > Training and support of the dentist and the laboratory.



A NEW PARADIGM IN IMPLANTOLOGY



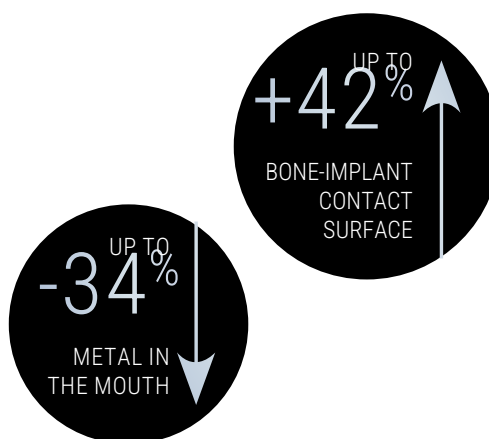
i bone®



IBONE® INNOVATION - A MORE BIOLOGICAL IMPLANT

■ NEW IMPLANT DESIGN AND NEW PROTOCOL

A less mechanical and more biological approach to implant treatment with this new implant design. The amount of metal has been significantly reduced (-34%) to allow the bone to express itself. Thanks to an innovative protocol, the iBone® implant is inserted gently, leaving a healing space that allows a genuine «biological bond».



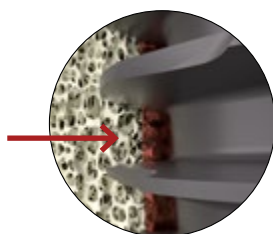
■ SIMPLE

- > Decision-making tree to adapt to all situations.
- > Guided protocol using tables on the kit.
- > Gentle insertion: the implant is inserted on to the threads.



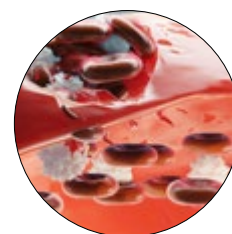
■ SAFE

- > 42% less bone stress.
- > Excellent primary stability (ISQ 73).
- > More bone around implants.
- > 34 % less metal in the mouth.



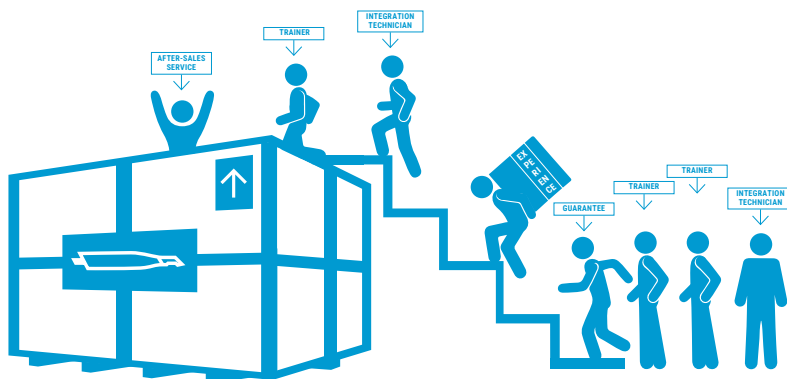
■ ACCESSIBLE

- > An alternative to grafts and sinus lifts.



DIGITAL EXPERTISE

- FRANCE'S 1ST CAD CAM PRODUCTION CENTRE
 - since 2010 (Teknika Lab)
 - 13 years of CAD CAM expertise
- 1ST INSTALLER OF INTRA-ORAL SCANNERS IN FRANCE
 - 8 years of expertise in intra-oral scanners.



- A TEAM DEDICATED TO SUPPORTING and integrating digital workflows in practices and laboratories.
- A RESEARCH AND DEVELOPMENT TEAM dedicated to continuous technological monitoring of scan performance, software, library enhancements and AI applications.





LYRA ETK MAKES LIFE EASIER

- **SIMPLIFICATION** of patient treatment, monitoring and exchanges between dentist - laboratory - patient.
- **SUPPORT** for dental practices and laboratories in their development and integration of new treatment protocols.
- **ONLINE TOOLS**, available 24 hours a day via the Dental App.
- **TRAINING IN LYRA ETK** protocols via e-learning and face-to-face sessions.
- **OPEN AND UNIVERSAL SYSTEMS**: our protocols are compatible with most intra-oral scanners, implant systems and implant planning and design software.

100% ONLINE

Dental app : a unique and comprehensive online services environment

PRODUCE

Use a single interface to quickly and easily order and manage all your prosthetic work, guides and aligners.



CAD CAM



Guides



Aligners

ORDER

Quick and easy ordering.



eShop



Package tracking



iPhysio® Selector

TRAINING

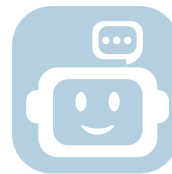
Everything you need to know about implantology and our products..



Media library



e-Learning



Assistant







WORLDWIDE COMPANY

LYRA ETK is based in two main sites in **PARIS** and **SALLANCHES**.

LYRA ETK enjoys an international reputation.

30

Countries

25

Distributors

4

European
subsidiaries



LYRA ETK - 726 rue du Général de Gaulle - 74700 Sallanches - France

Service clients France : T. +33 (0)1 76 42 00 60 | International Customer Service: T. +33 (0)1 76 36 14 04
info@lyraetk.com | www.lyraetk.com