

Guided surgery

SIMPLIFY YOUR MOST COMPLEX TREATMENT PLANS
WITH 100% CUSTOMISED GUIDED SUPPORT, FROM PLANNING TO INSERTION

LYRA GUIDE

With the LYRA Guide platform, choose the level of support you want.

Lyra Guide plans and prints :

Submit your impressions (digital or physical*) and DICOM files on the platform, our experts offer you an implant planning. After validation, Lyra Guide will make the 3D printing.

**possibility to have a courier to pick-up the physical impression*

Step 1.



I submit my impression and cone beam on LYRA Guide.

Step 2.



LYRA Guide carries out the implant planning.

Step 3.



After validation of my part, LYRA Guide prints the guide.

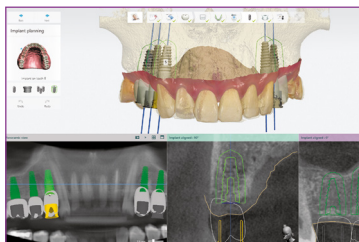
Step 4.



I do the surgery.

I plan, LYRA Guide prints: Upload your guide STL file to the platform, Lyra takes care of the 3D printing of the guide.

Step 1.



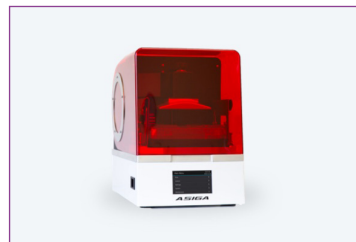
I do the planning myself.

Step 2.



I upload my guide on LYRA Guide.

Step 3.



LYRA Guide prints the guide.

Step 4.



I do the surgery.

Perform your most complex cases with NATURACTIS COMPLETE SURGERY

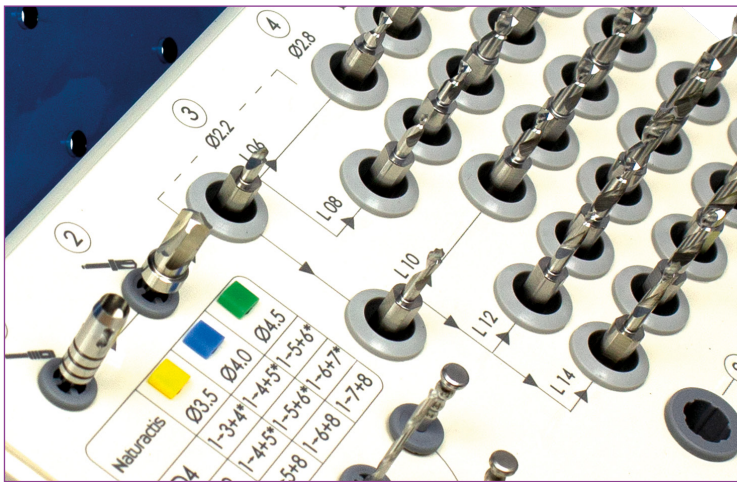


The kit allows you to insert Naturactis implants from diameter 3.5 to 4.5 and length 6 mm to 14 mm.

All clinical indications can be performed with this kit:

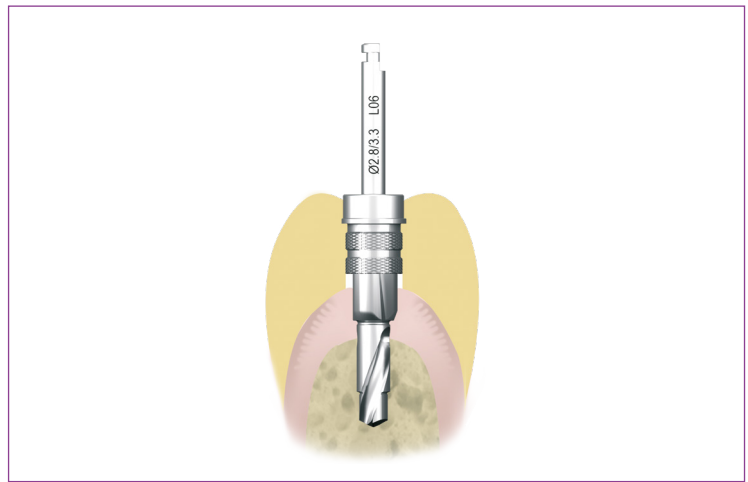
- From single-unit case, partial to total edentulism
- From immediate functional loading on the framework to deferred loading
- From a conventional prefabricated prosthetic system to a custom prosthetic system through CAD/CAM

Clear, fluid protocol



The kit has a range marked by arrows that tells you the series of drills to use.

A guided drill right from the start



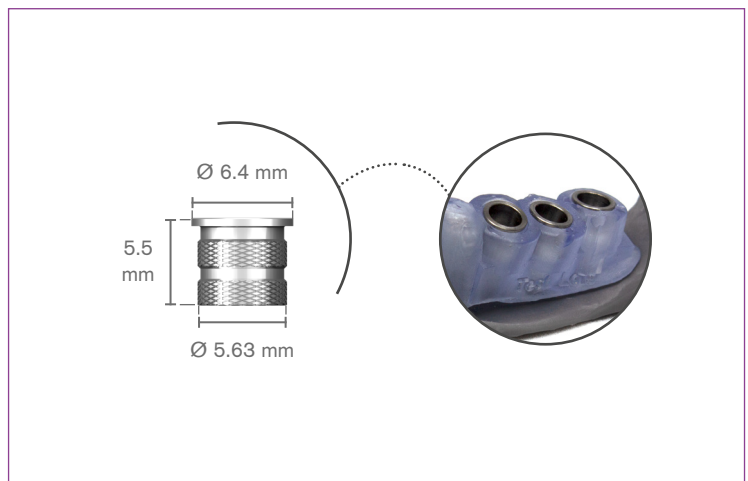
With self-guided drills, including the shortest versions, the complete surgical kit ensures simple and effective guidance.

A location for your implants



The kit includes arched locations to place the tubes with the implants in the correct order, in line with the planning to ensure a smooth protocol from bone marking to implant insertion.

A single ring size



The guide ring is one size, avoiding any handling of additional spoons or rings. This makes it safer to handle the guide.